

METODOLOGIE INNOVATIVE PER LA CONSERVAZIONE PROGRAMMATA

# la luce nelle chiese

giorgio della longa

mantova, 19 aprile 2016





parte prima







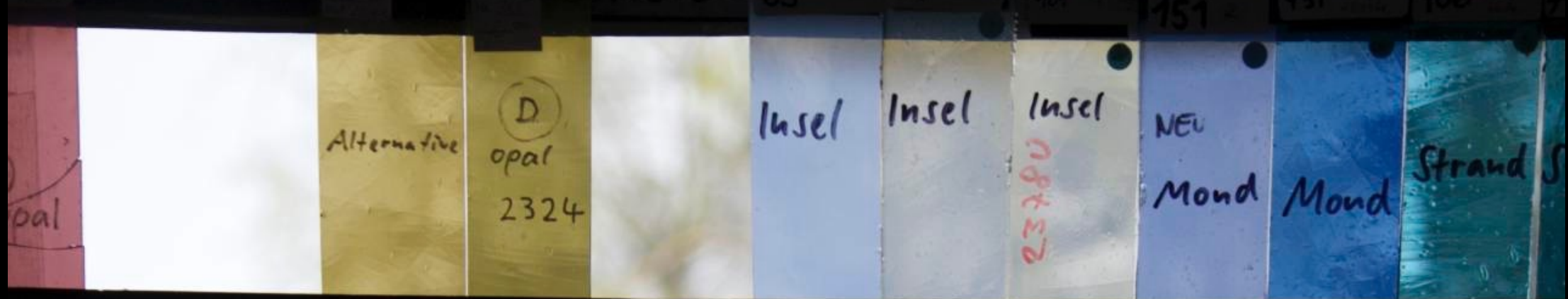




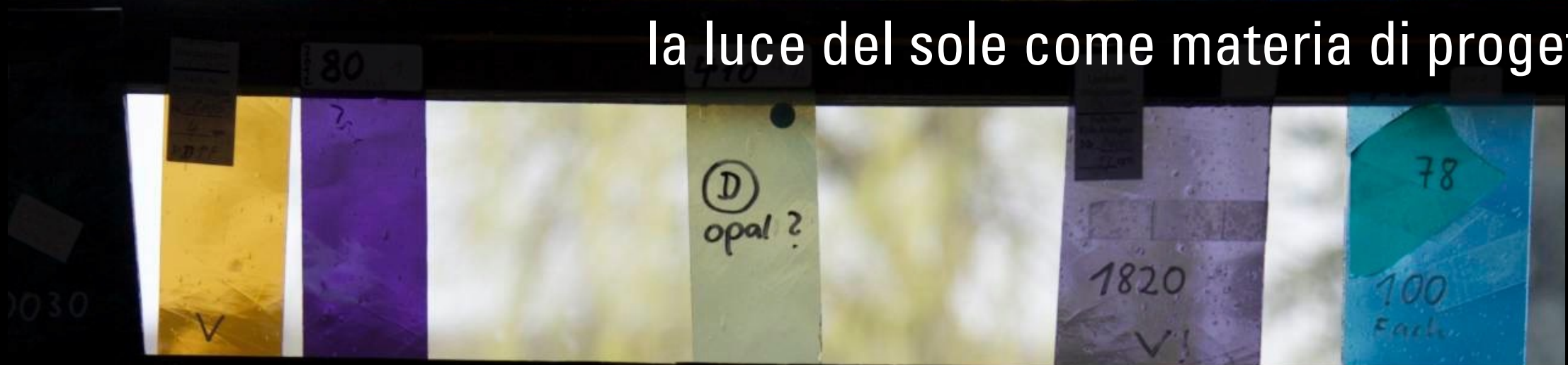








la luce del sole come materia di progetto































532 1-4  
134 1,4  
263 1-3,6  
203 1-4  
301  
228  
329 1,2,5





750  
448  
523  
12  
439  
410  
6

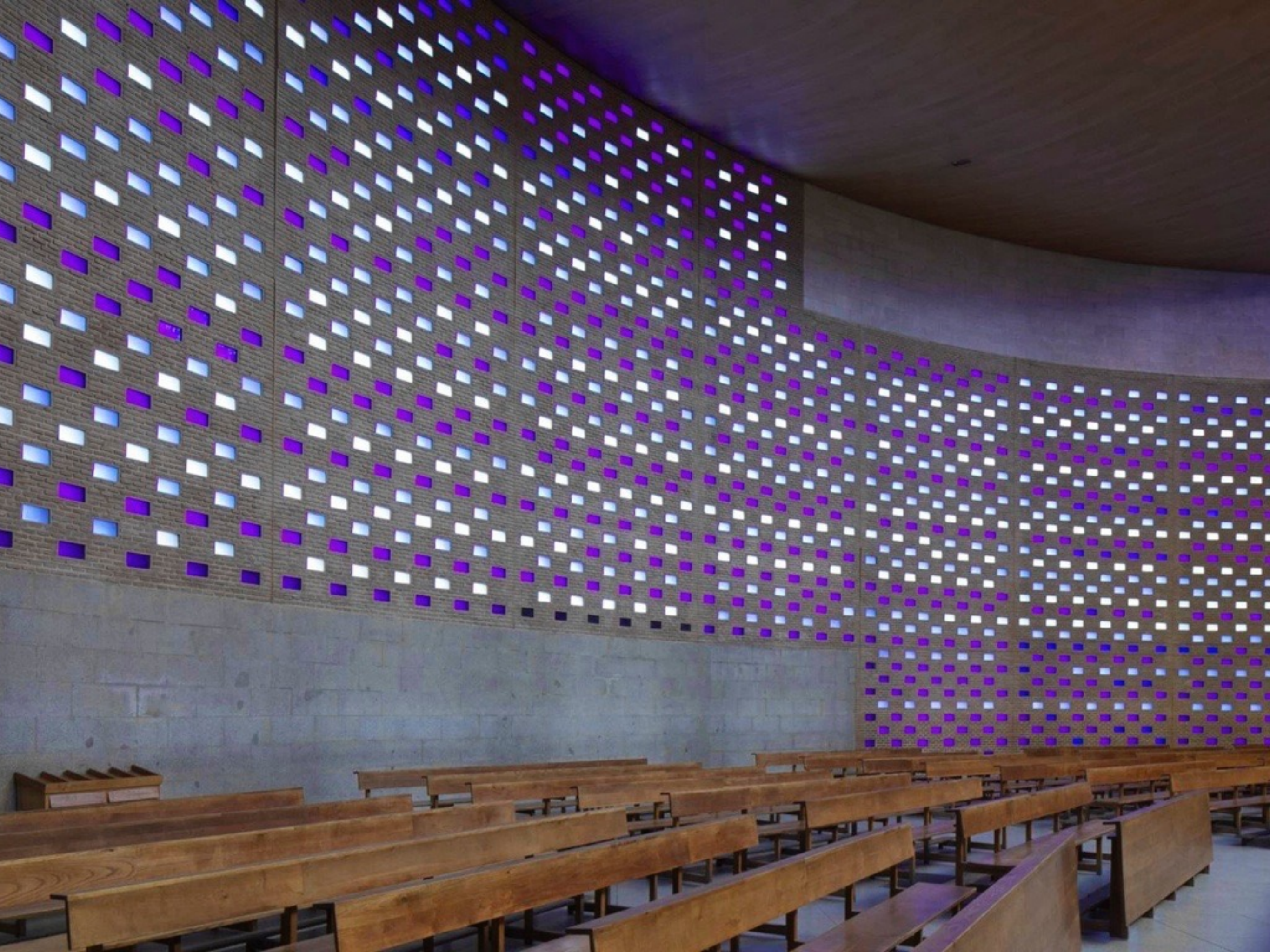






















luce del sole e luce artificiale



































la luce e il tempo























RESUCITO  
QUE SE NOTE











le lampade





















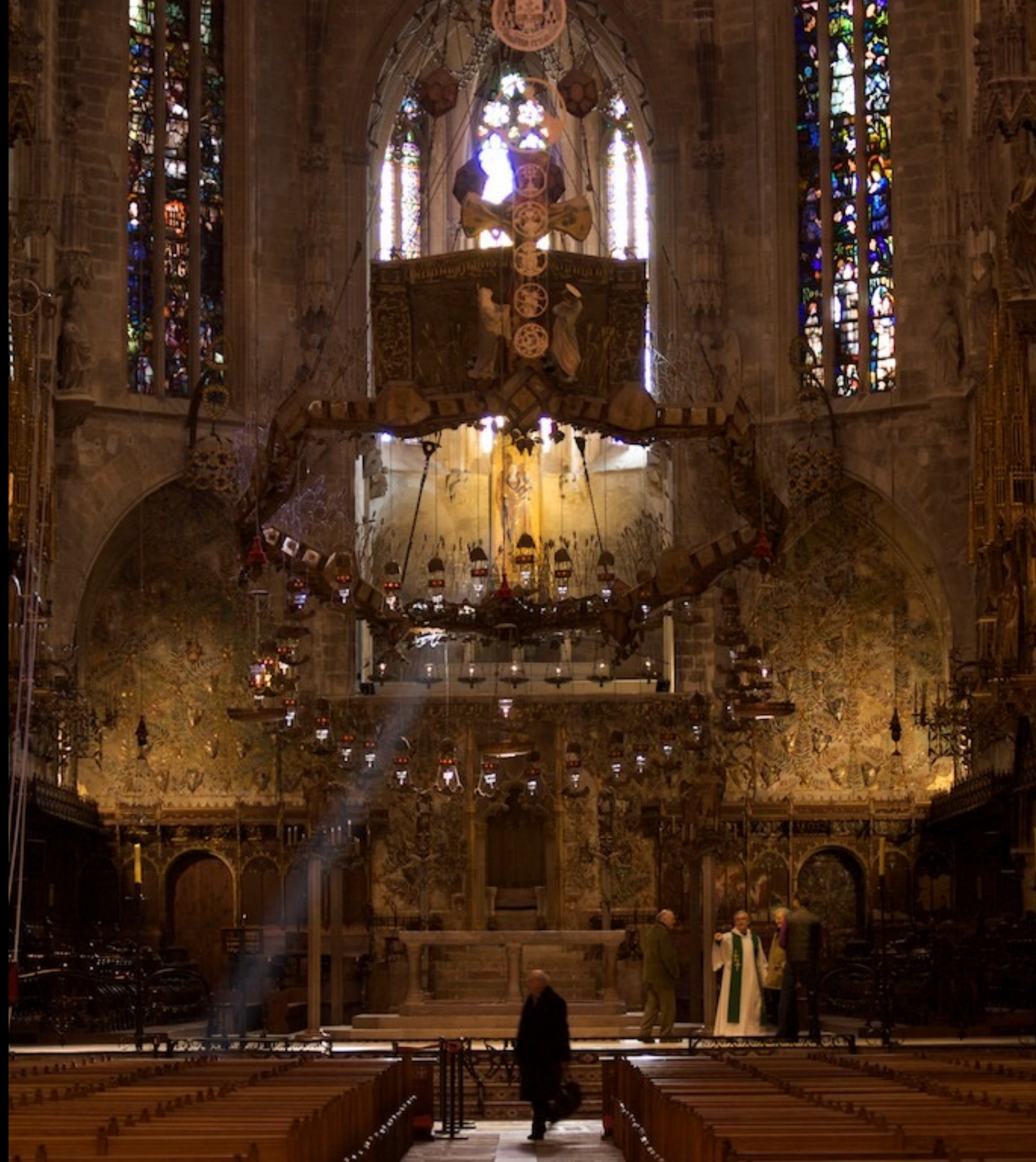




valori simbolici ed emozionali

















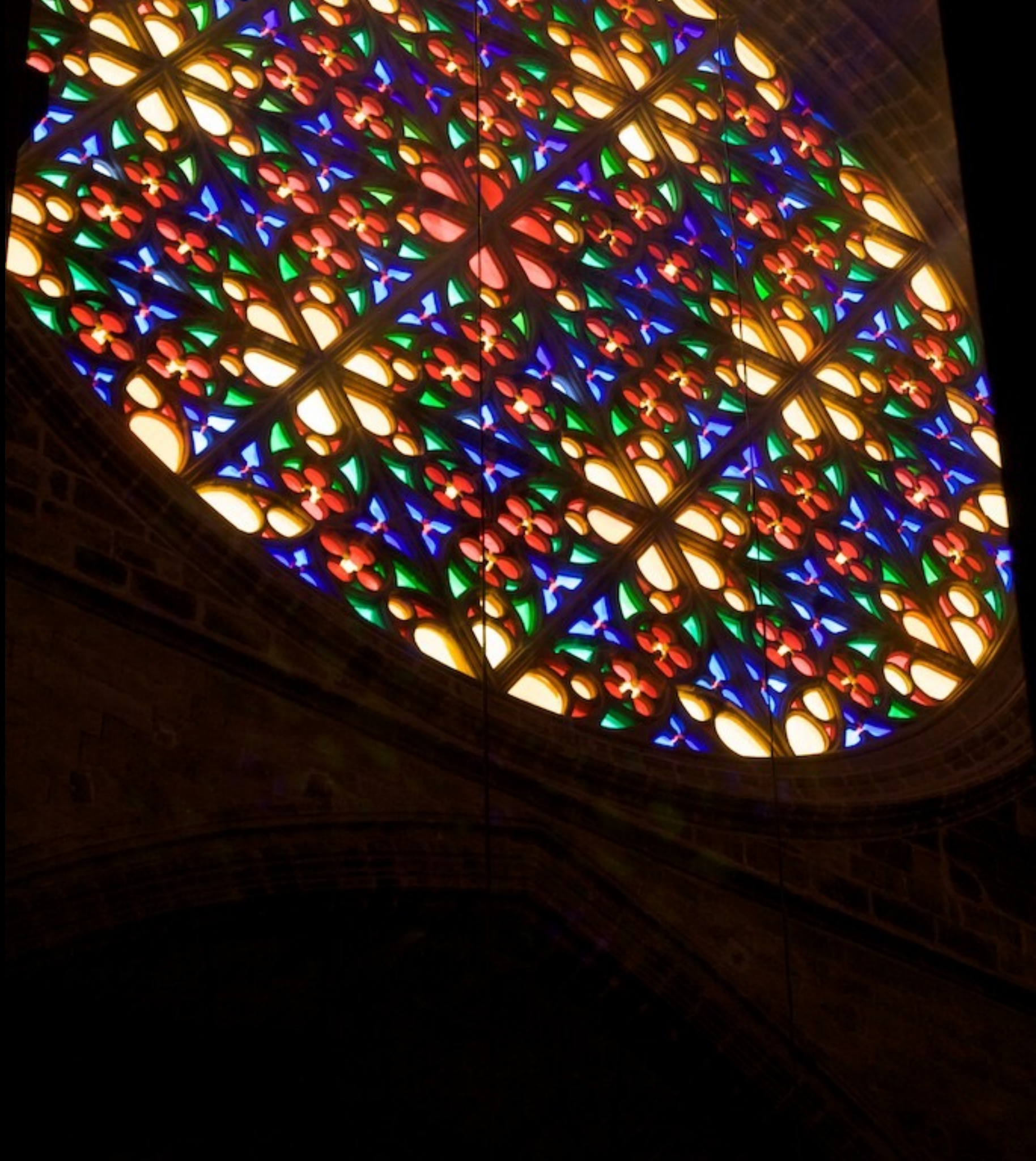




luce e colore















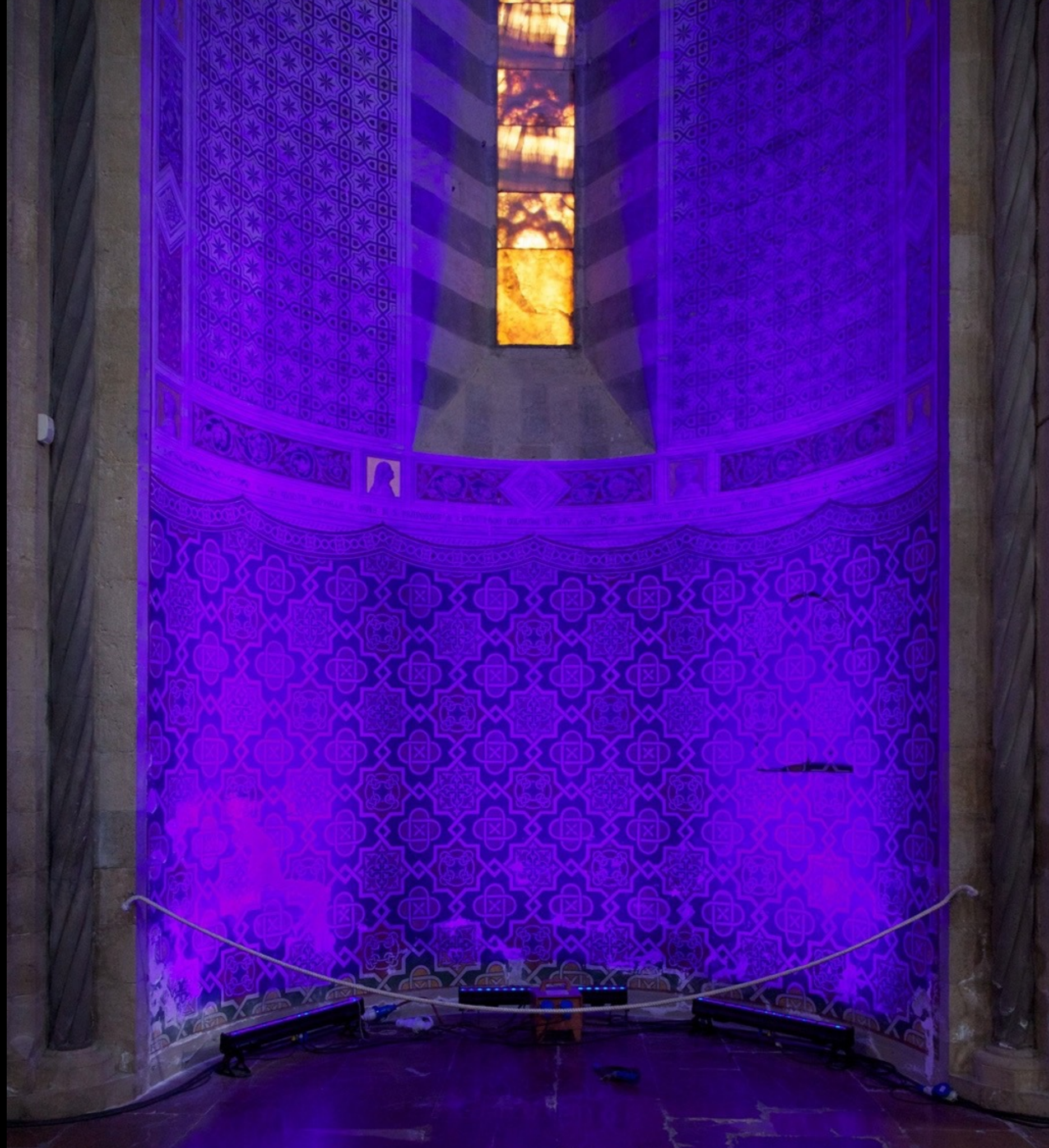






















parte seconda

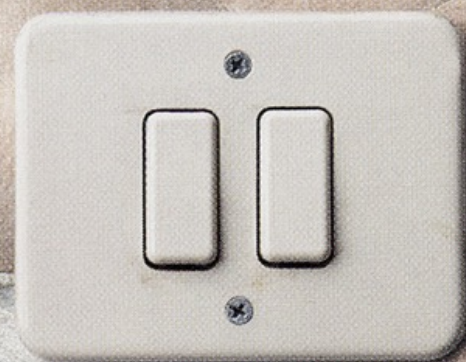


METODOLOGIE INNOVATIVE PER LA CONSERVAZIONE PROGRAMMATA

# il nuovo sopra l'antico

giorgio della longa

mantova, 19 aprile 2016







SAN LORENZO  
ROMANO

IL CARTELLI

PROGIONE DEI SS. APOSTOLI PIETRO E PAOLO  
MAMERTINUM





















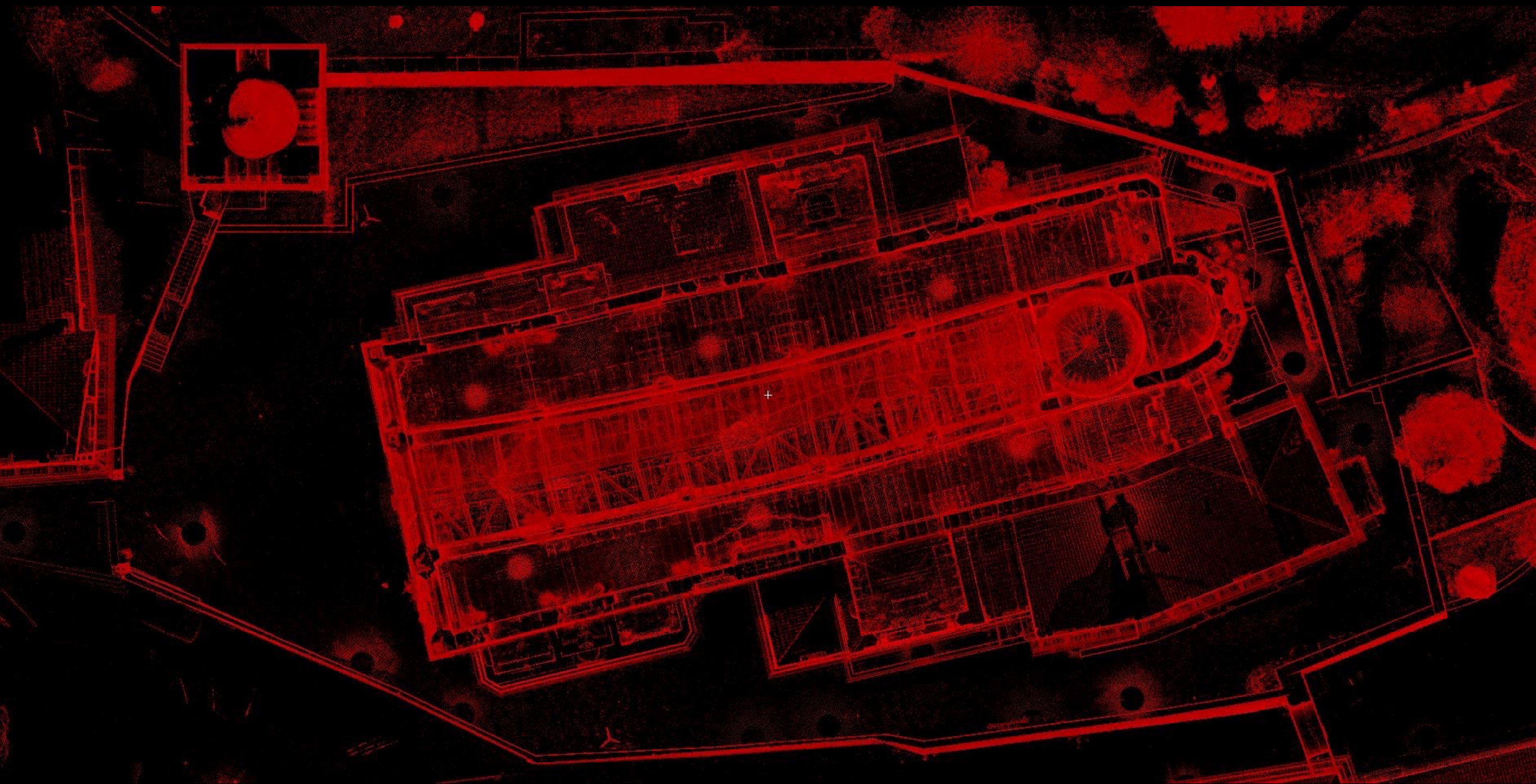




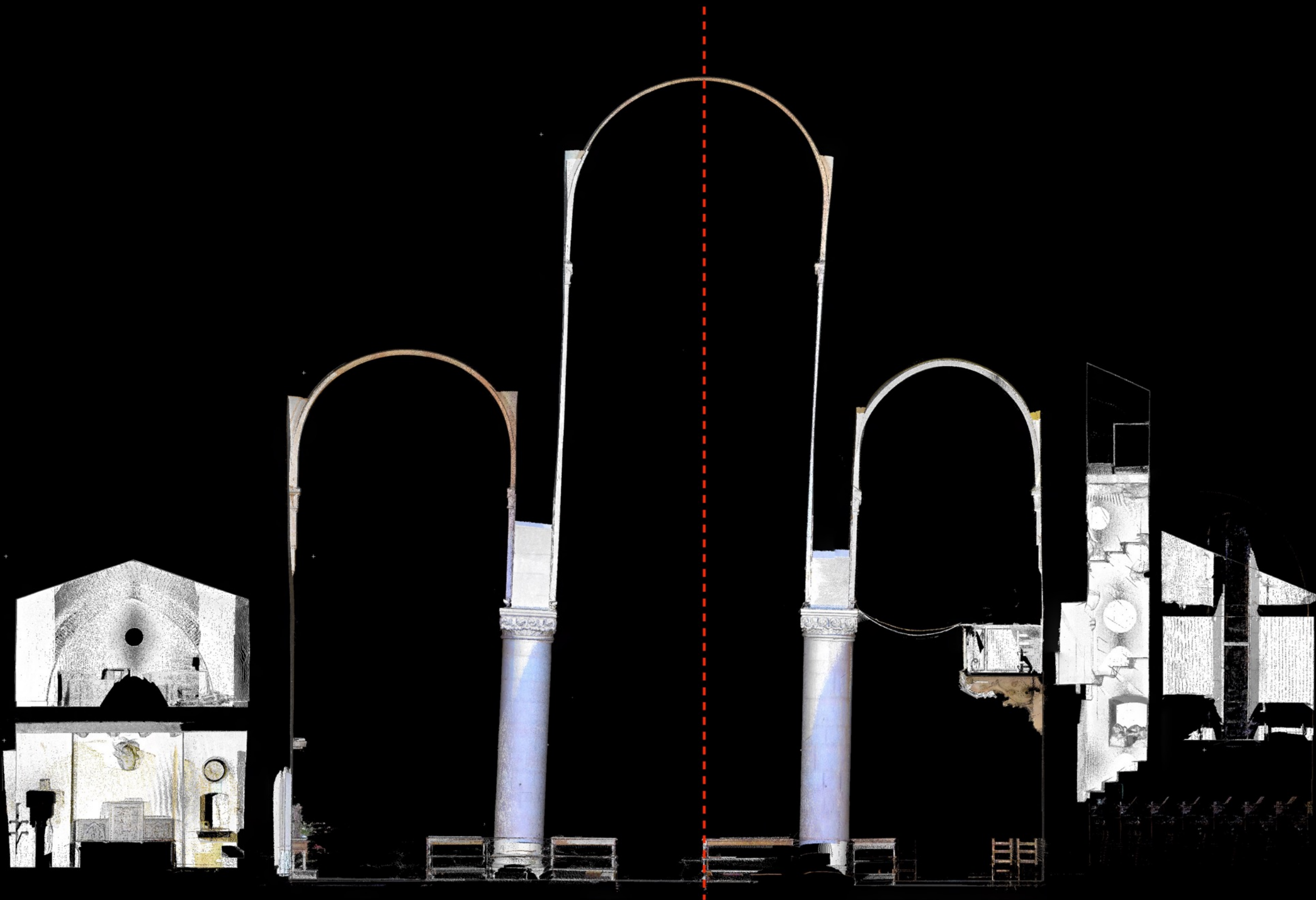




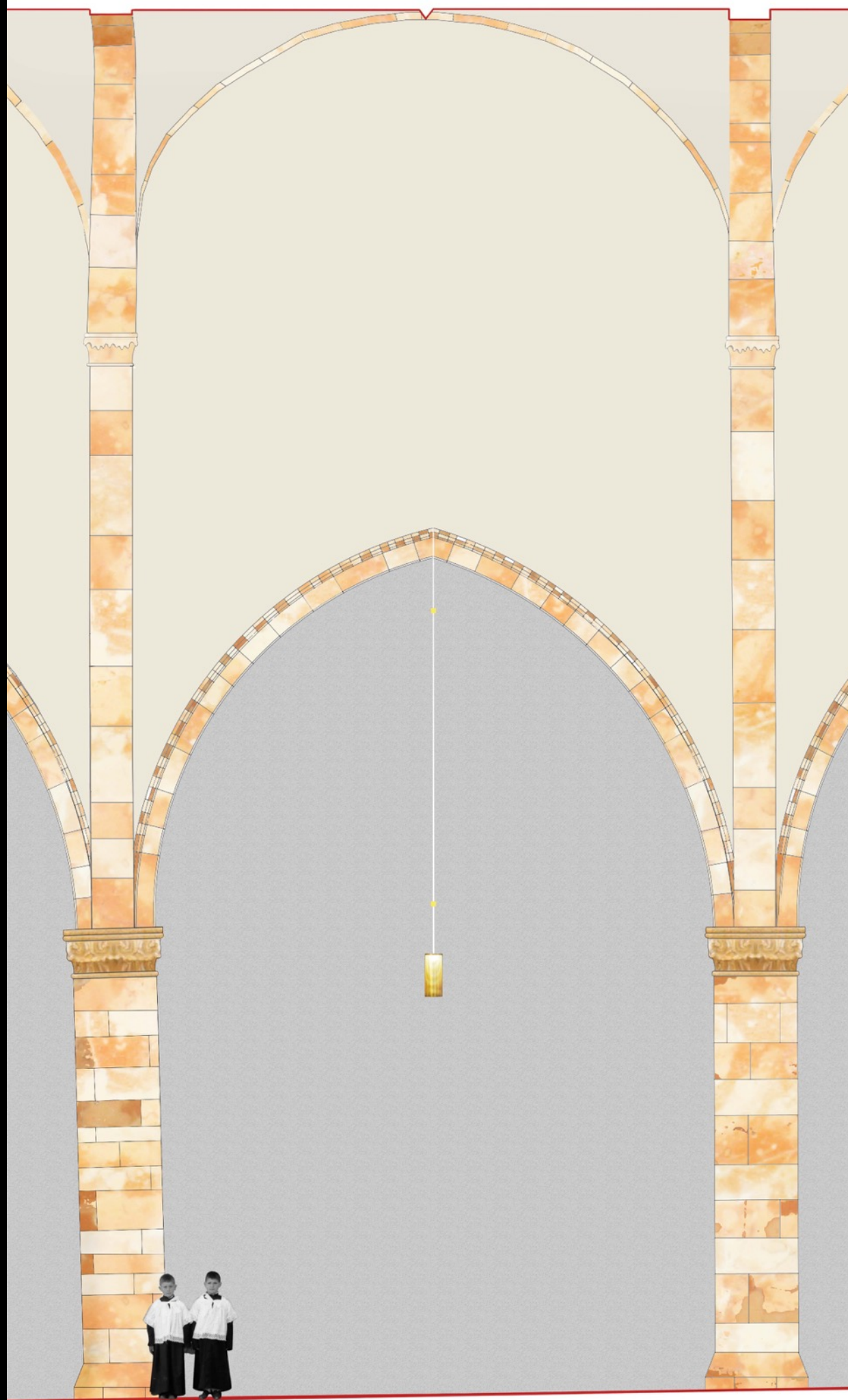






















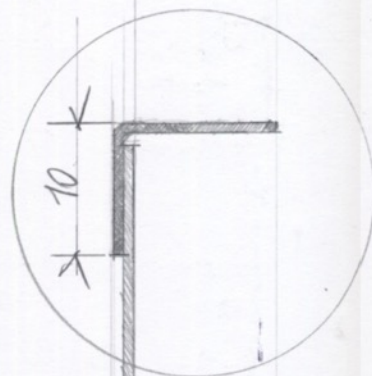
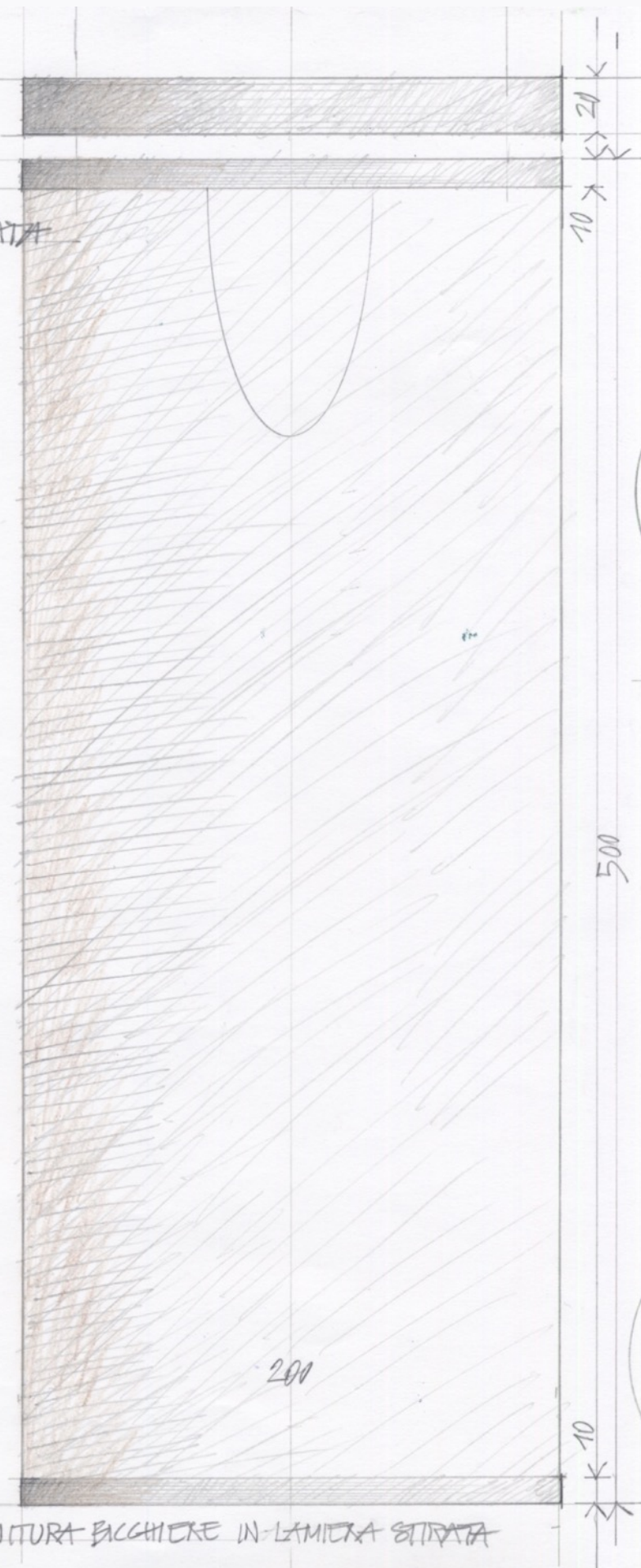
DISSIPATORE

COLLARE

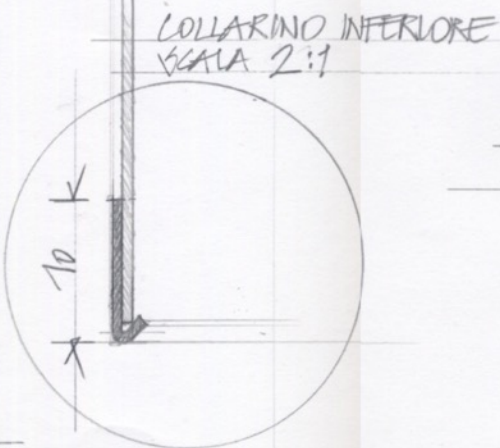
LAMIERA STRATA

SCALA 1:2

PROPOSTA PER FINITURA BACCHIERE IN LAMIERA STRATA

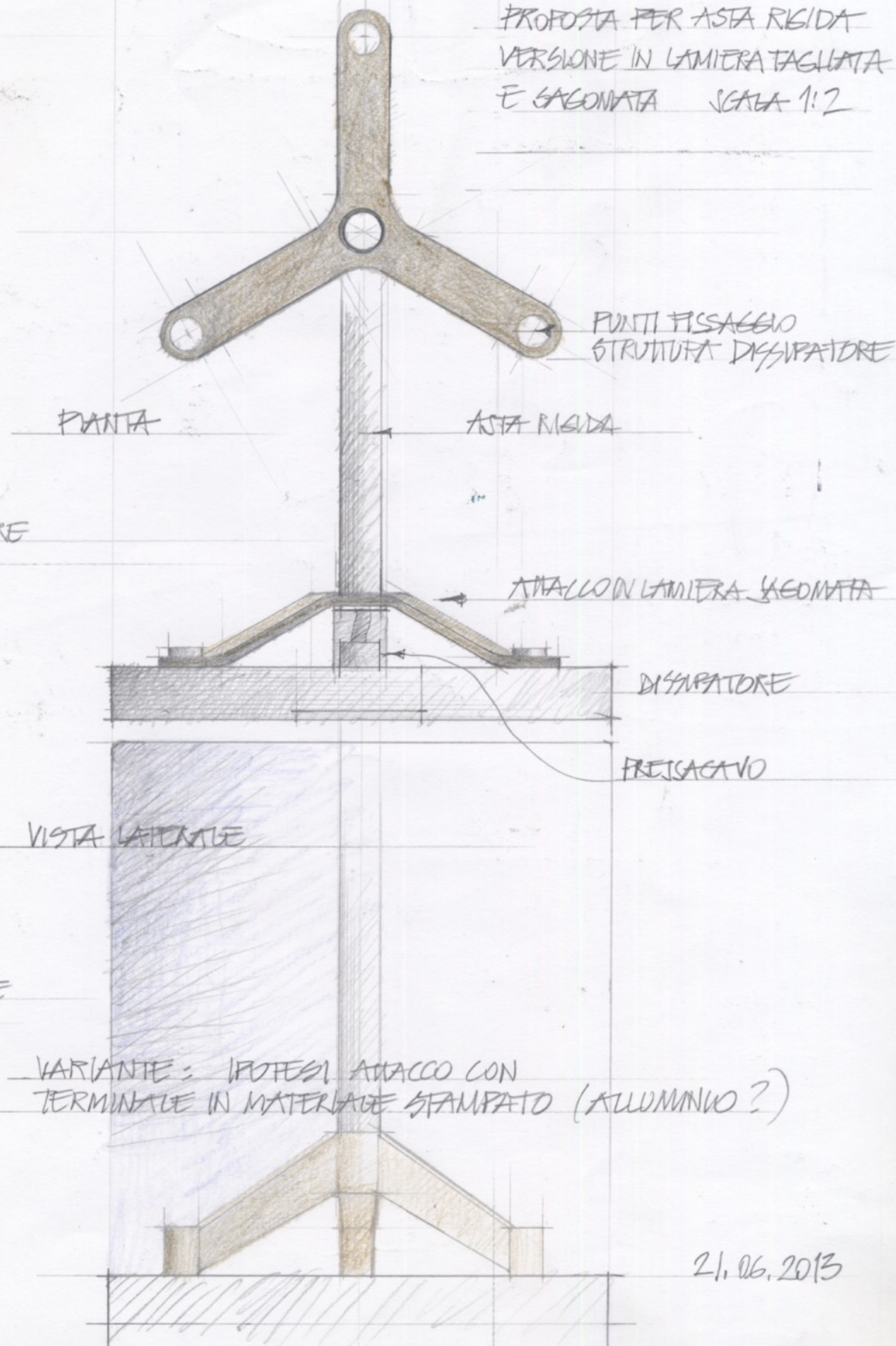


COLLARINO SUPERIORE  
SCALA 2:1

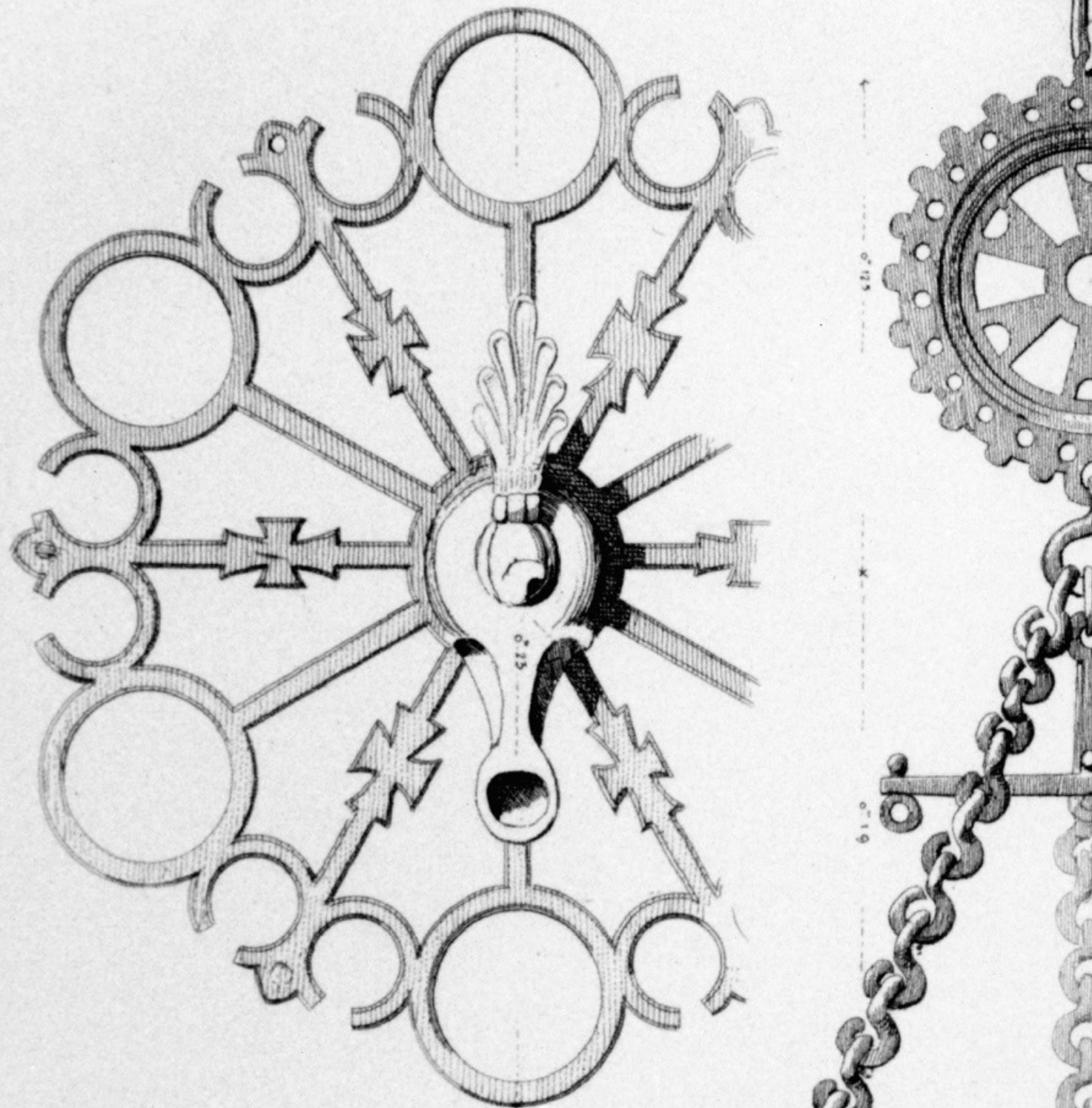


COLLARINO INFERIORE  
SCALA 2:1

APPARECCHIO PENDENTE  
PROPOSTA PER ASTA RIGIDA  
VERSIONE IN LAMIERA TAGLIATA  
E SAGONATA SCALA 1:2



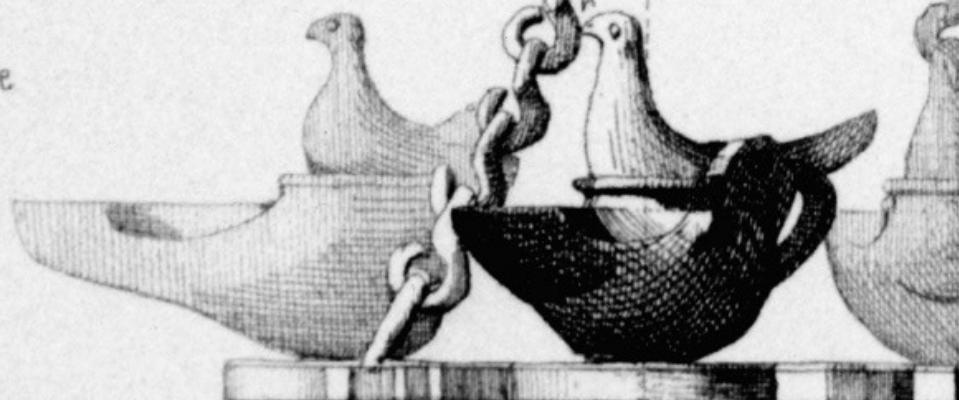




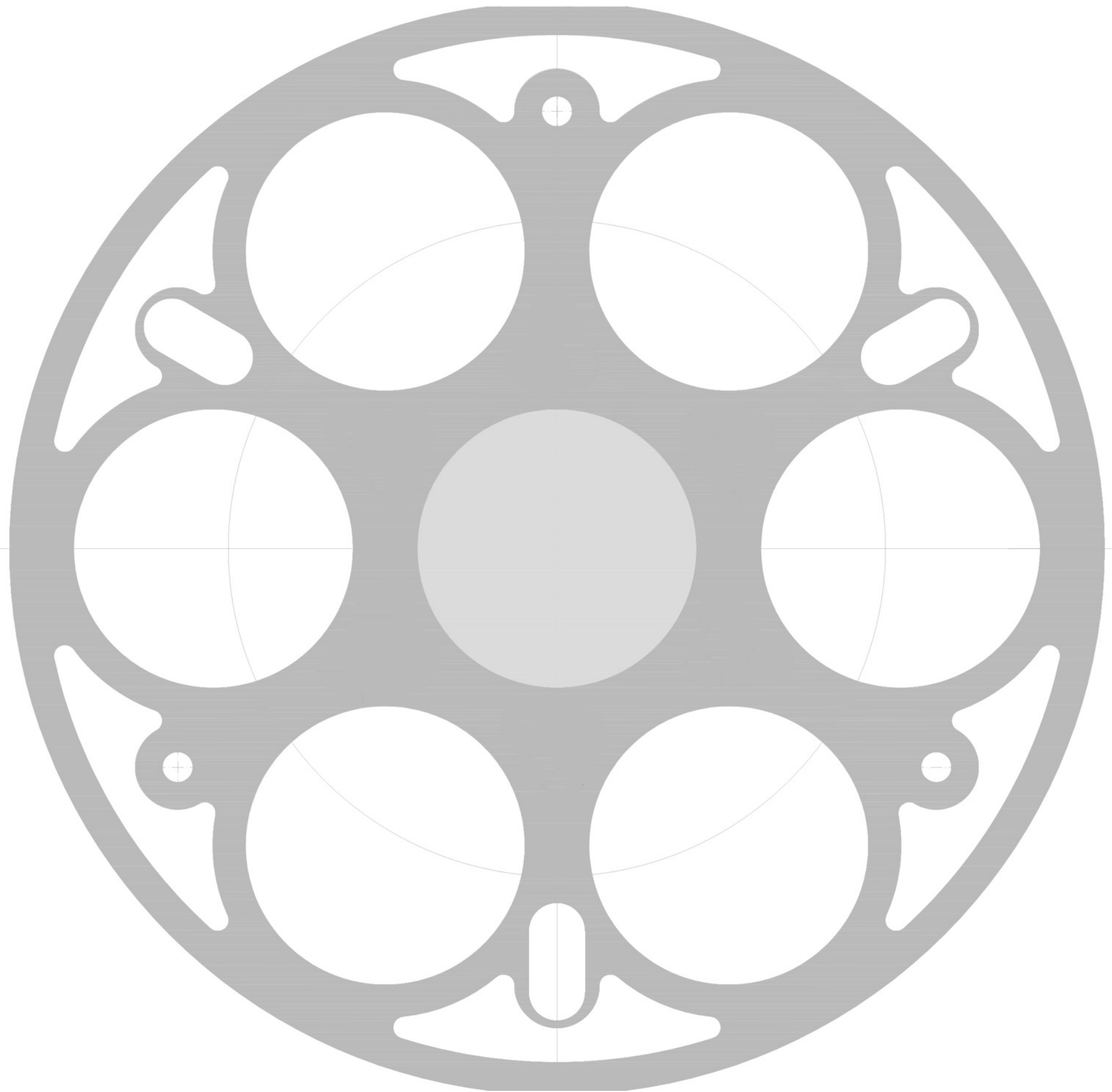
CORONA PHALARIS

En Bronze

V<sup>e</sup>















Reggiani ha "intuito" la magia luminosa del mio disegno, come valore di fantasia, perché la luce si muove in crescendo allontanandosi e si spegne avvicinandosi.

Ed egli ha intuito che ciò avrebbe incontrato. E' la Reggiani.

1 MAR. 1974

*intuiti  
quello  
left a  
Reggiani*



*Roberto*

*io proponi di procedere  
col tipo*



*1*

*per arrivare a delle appliques singole  
colti, o doppie o triple*

*PARETE*

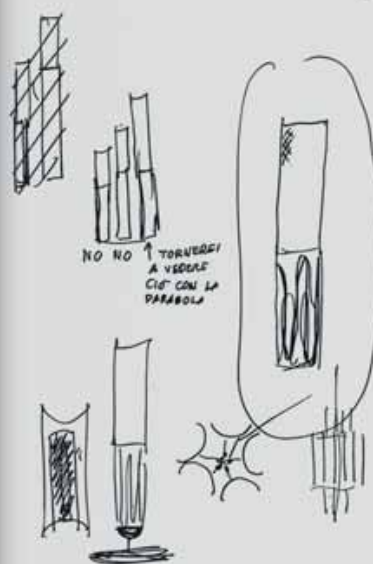
*oppure con lampade da appendere*

*o/a a tre o/a a quattro*



*RICORDARSI CHE  
CON MEZZI SEMPLICISSIMI  
SI SONO OTTENUTO  
LE LAMPADE P DELLA CANDLE*

*e non potiamo  
rinferire ad effetti  
più interessanti*



Reggiani "sensed" the luminous magic of my design, as an imaginative value, because the light moves, getting bigger as you move away. And he sensed that he would meet that. This is Reggiani.

LAMPADINE CON  
REGGIANI 1974























